

InMind Movie Agent: Responsivity through Incremental Processing

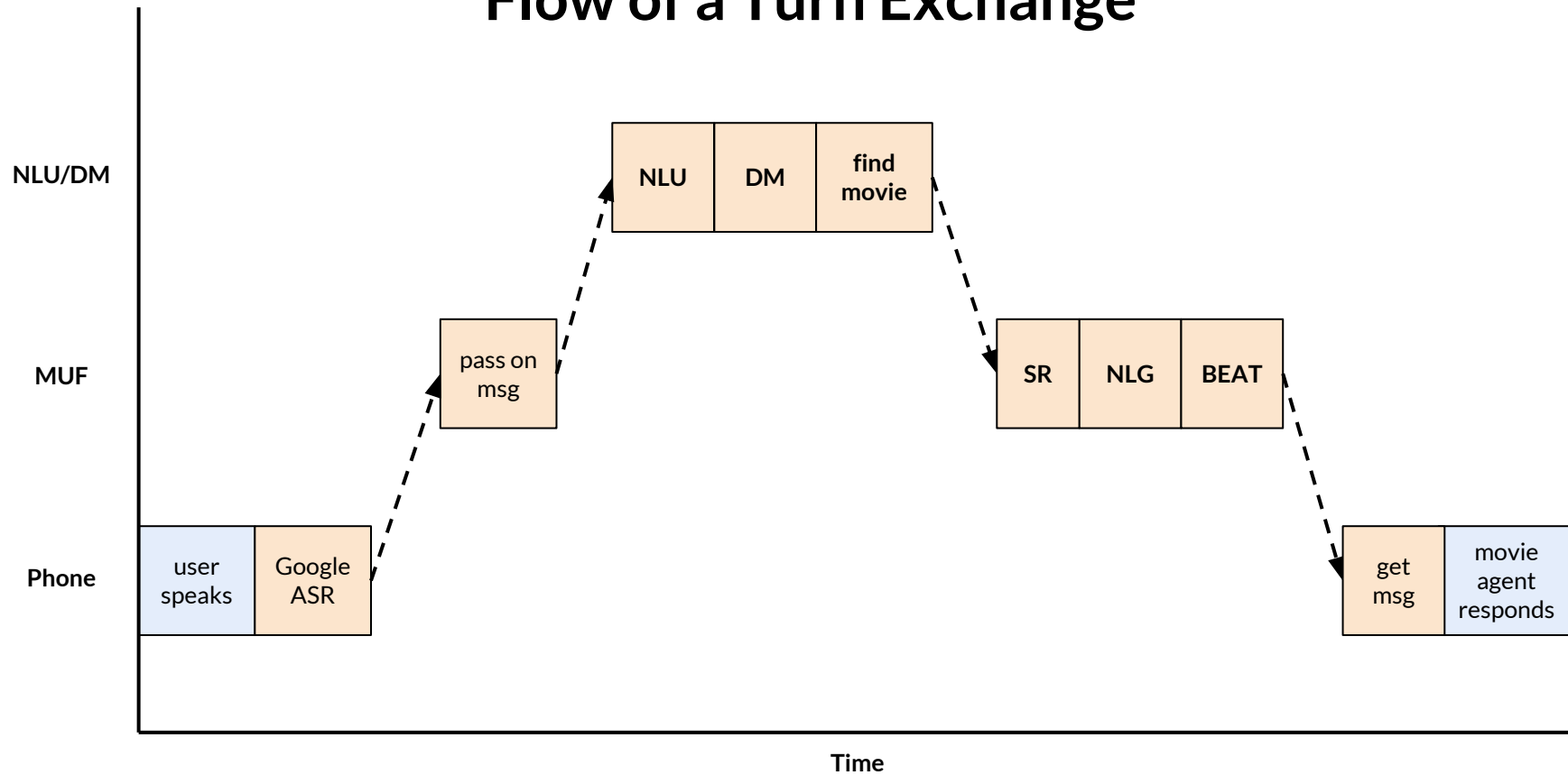
Vivian Tsai

25 Aug 2017

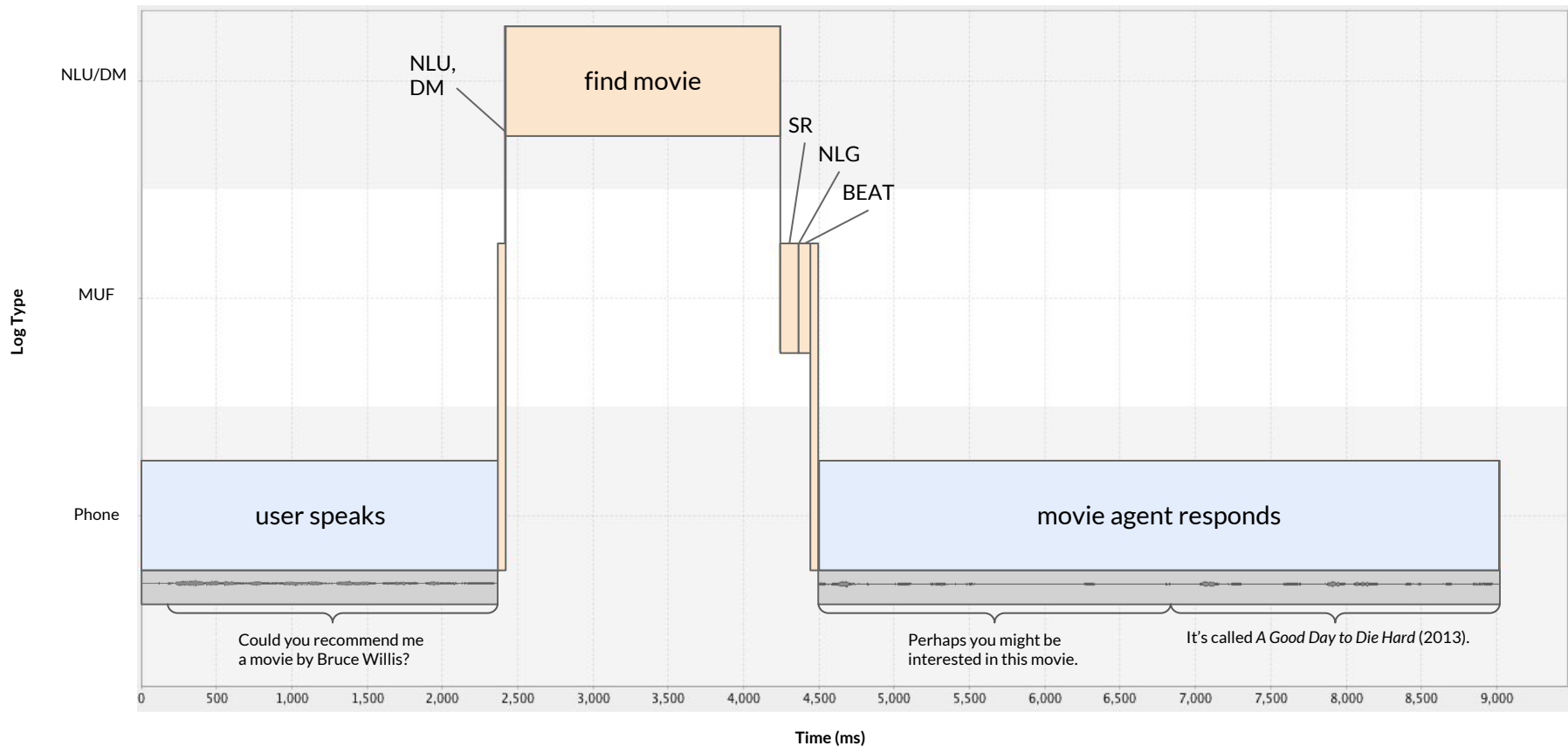
Example Conversation

turn exchange	user	My favorite is Jennifer Lawrence.	
	movie agent	<u>Wow, here is one I'd love to go to.</u> It's called Silver Linings Playbook (2012).	←
turn exchange	user	Can you recommend another? I don't think I'd like that.	
	movie agent	<u>Perhaps you might be interested in this movie.</u> It's called Joy (2015).	←

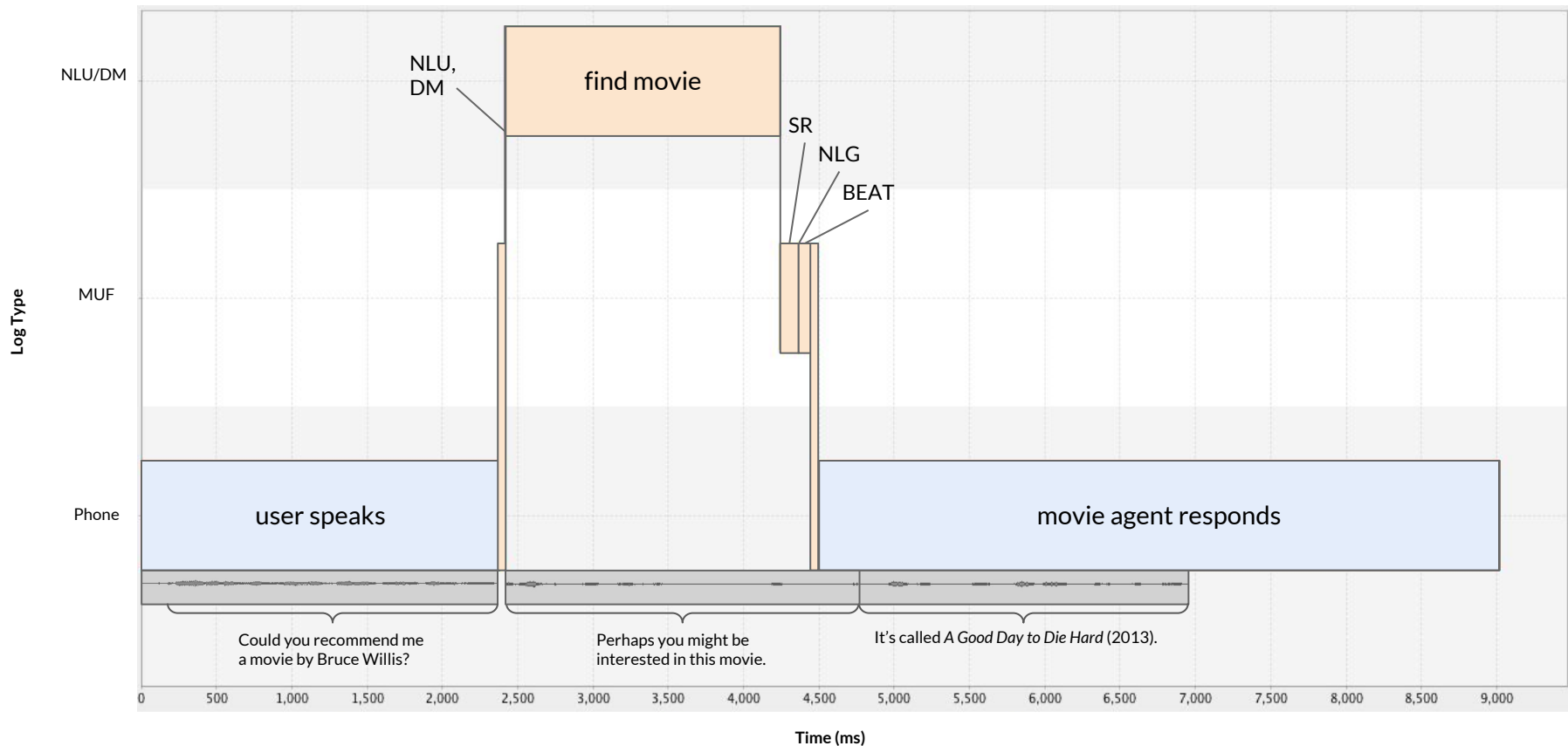
Flow of a Turn Exchange



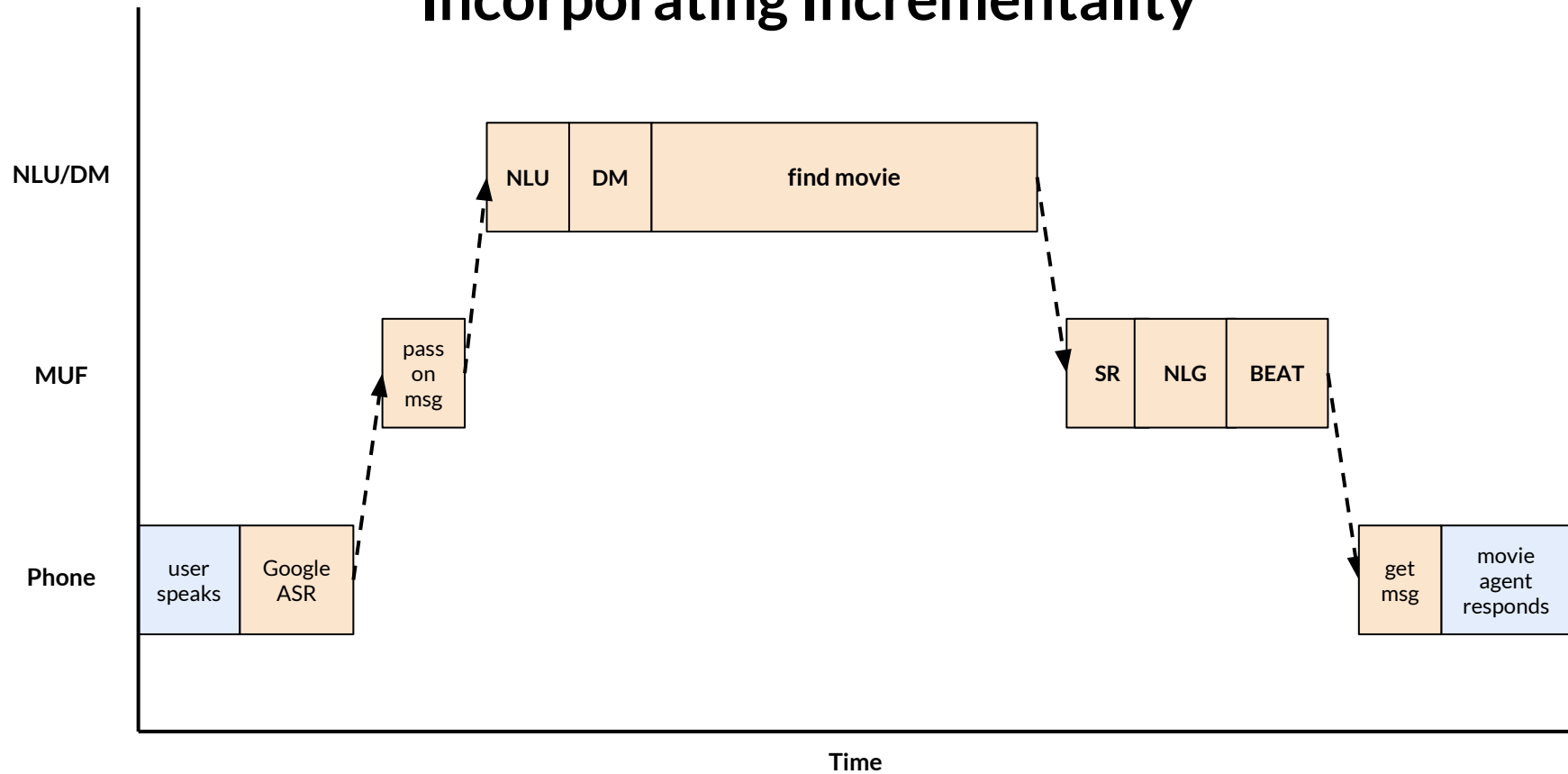
Example of a Turn Exchange



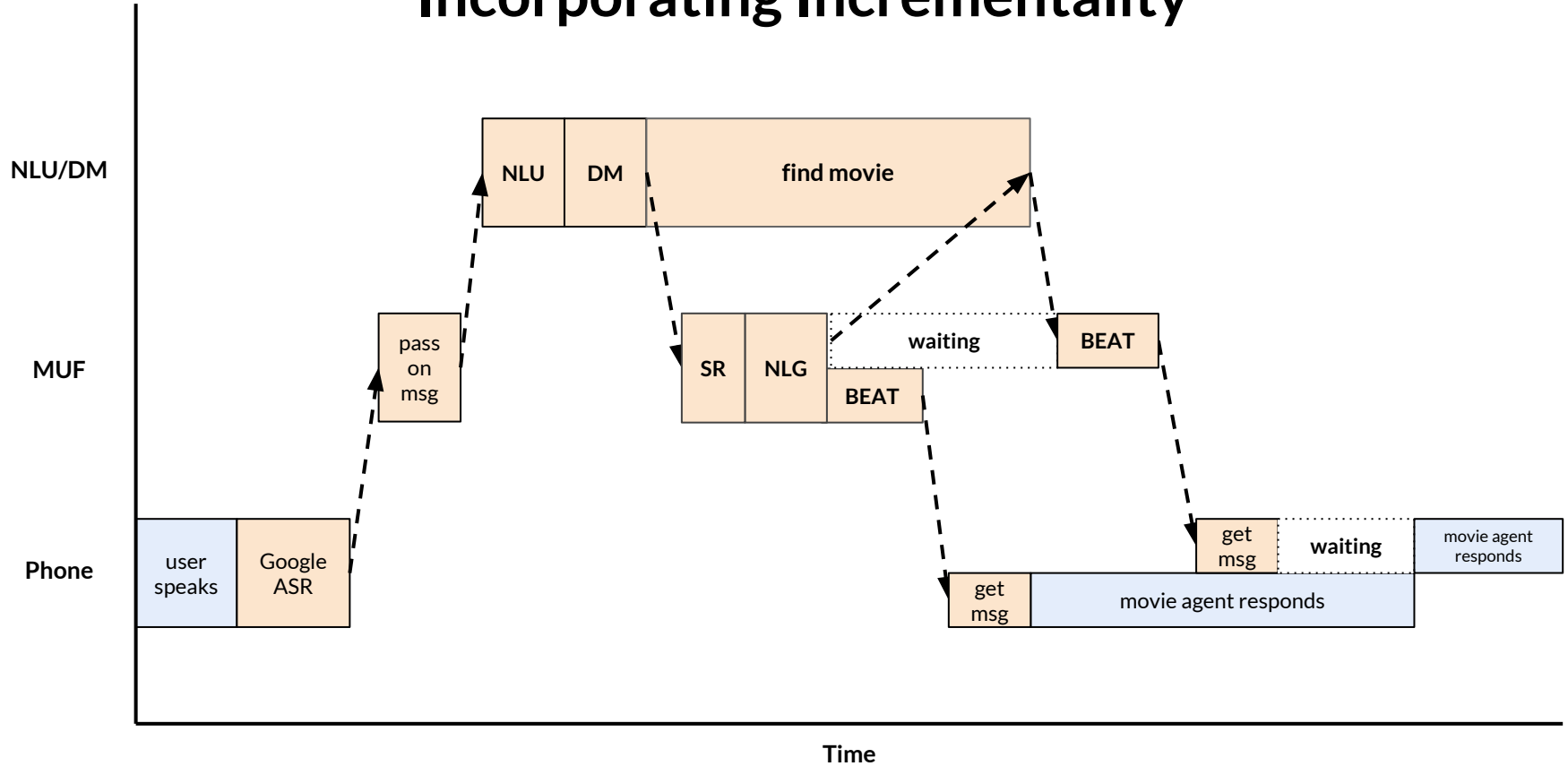
Example of a Turn Exchange



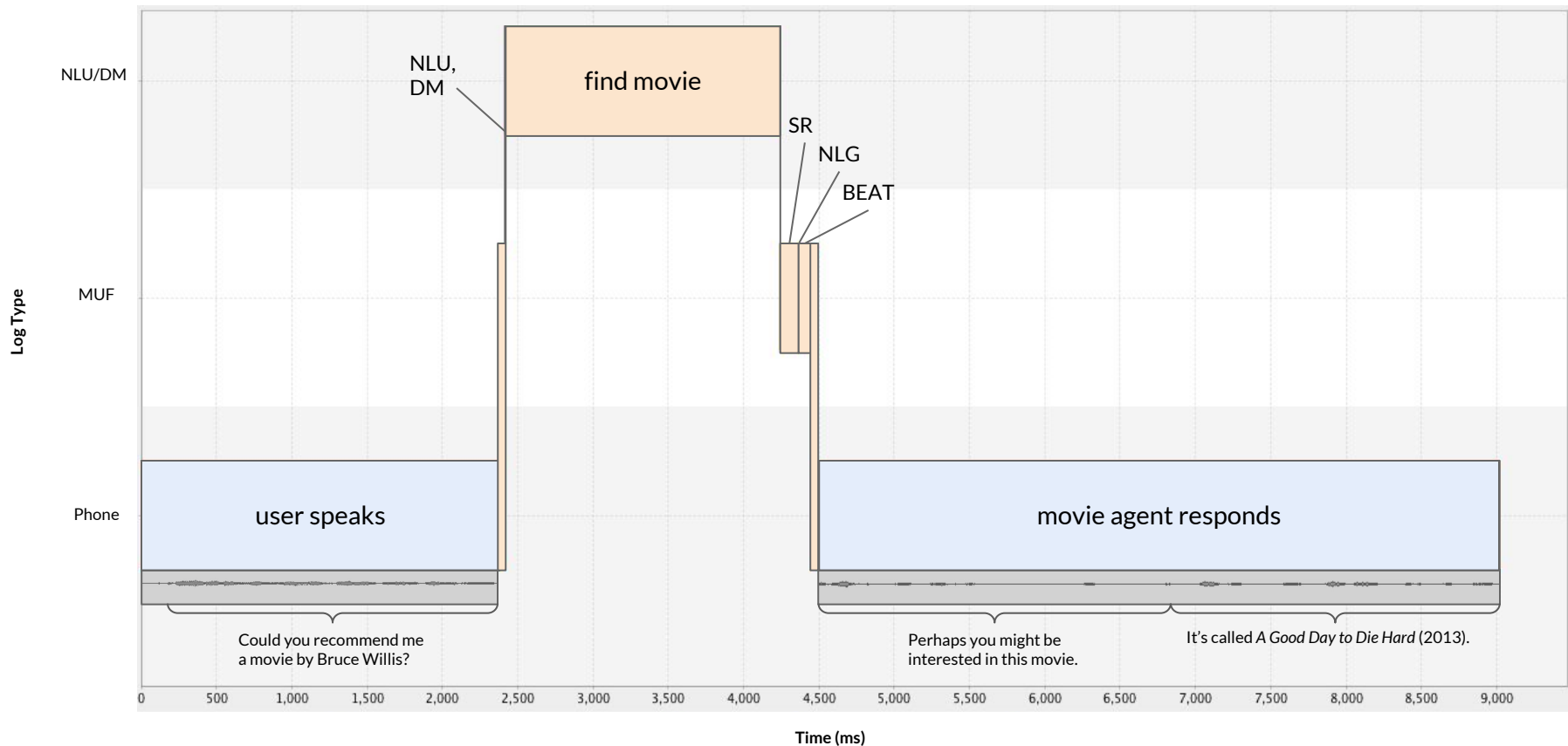
Incorporating Incrementality



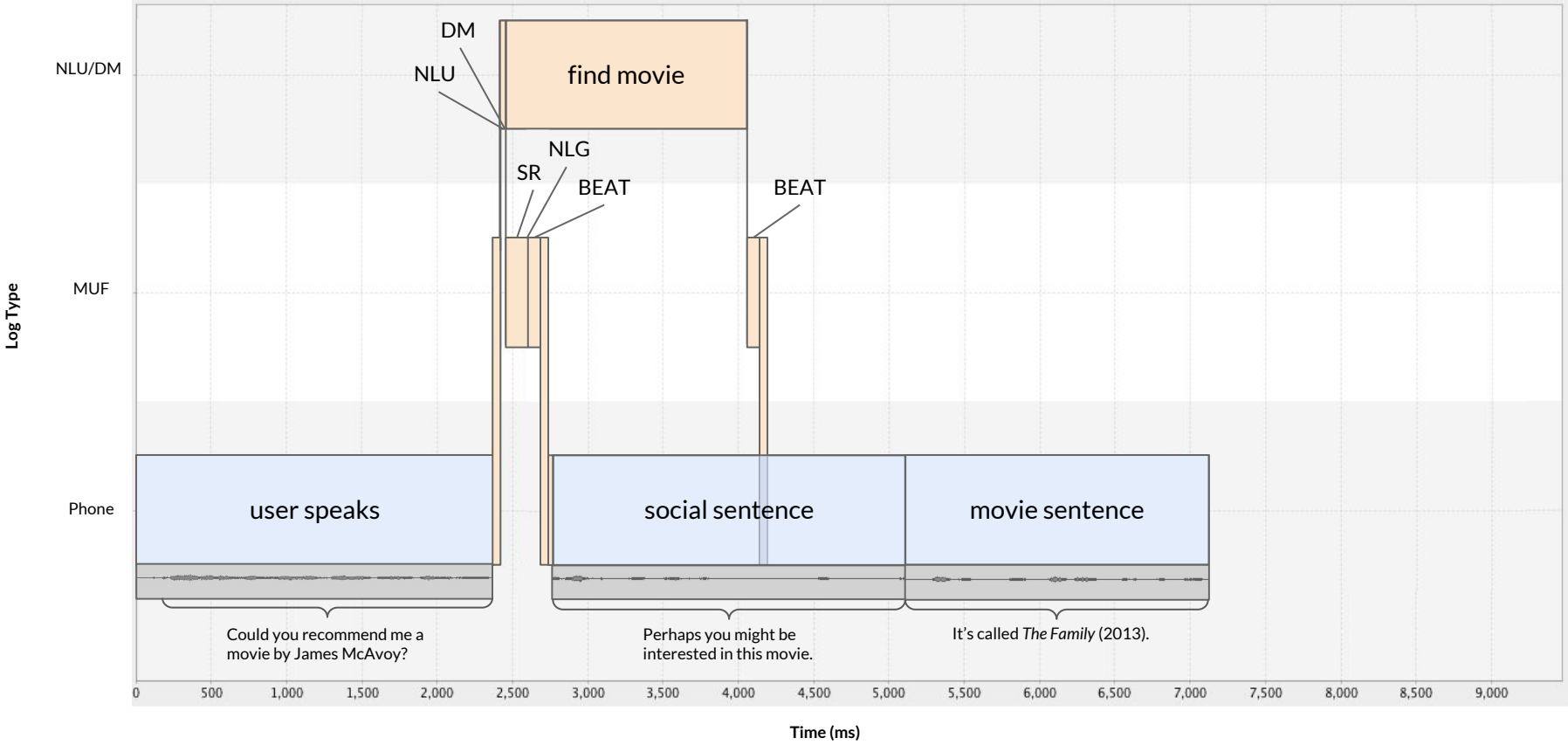
Incorporating Incrementality



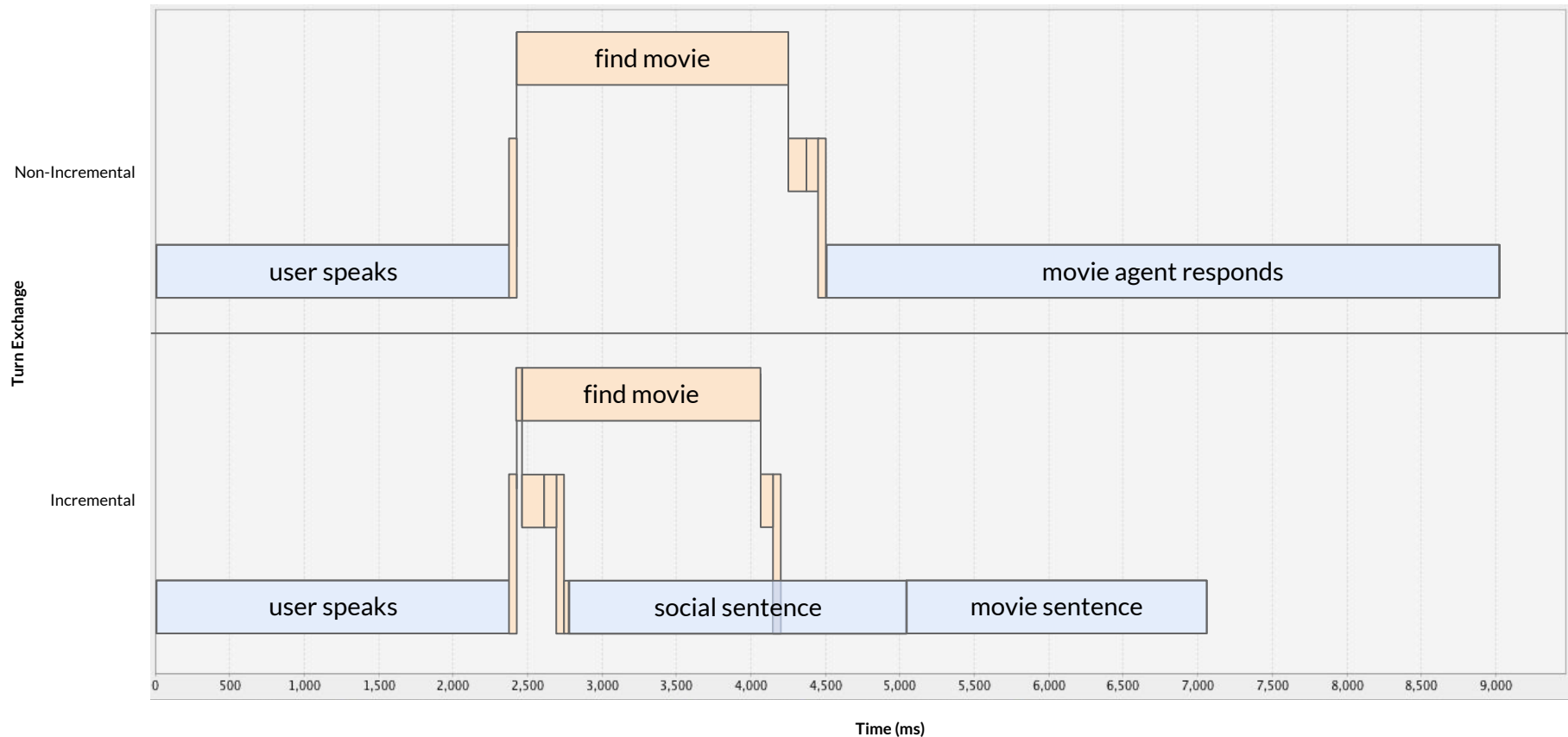
Non-Incremental Turn Exchange



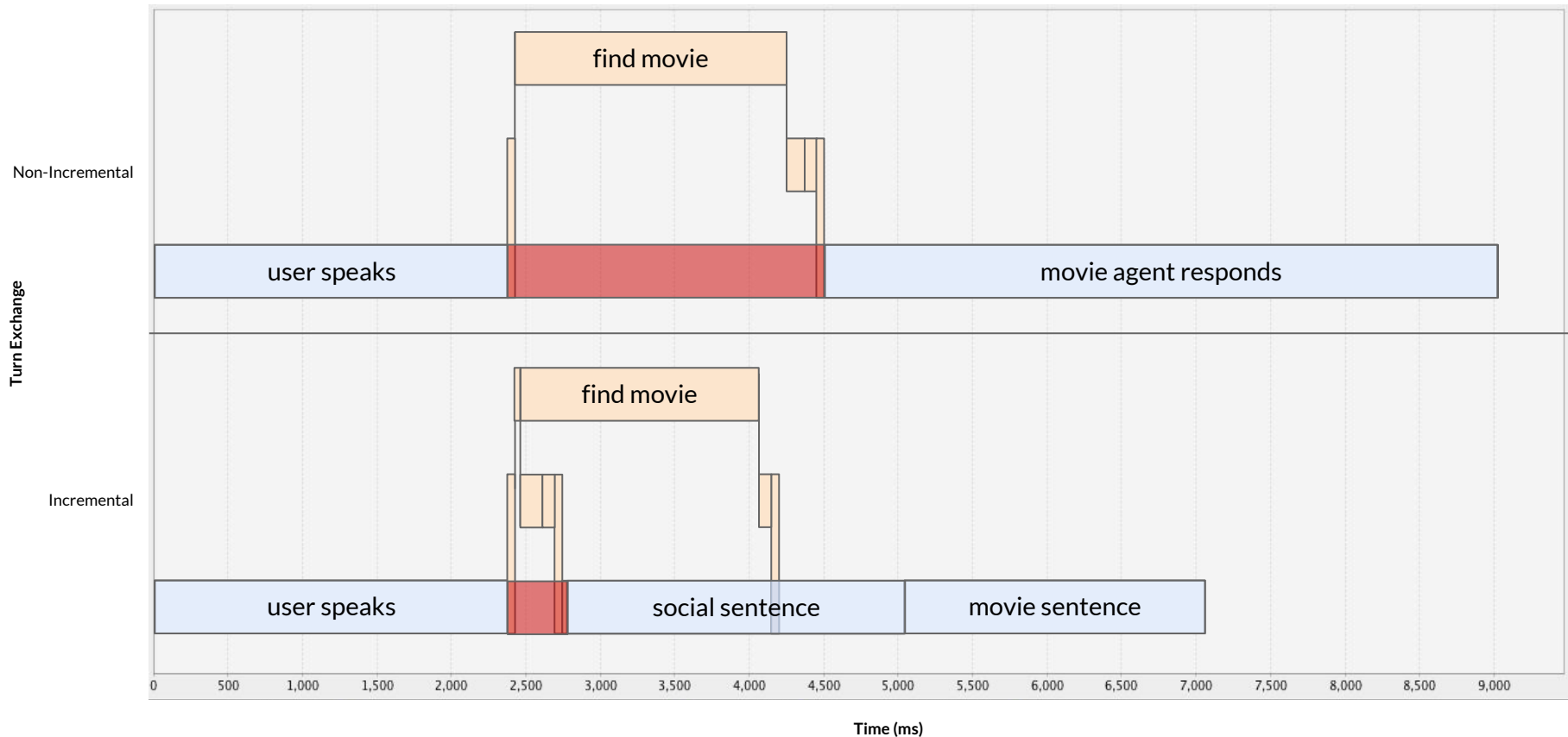
Incremental Turn Exchange



Non-Incremental vs. Incremental Turn Exchanges

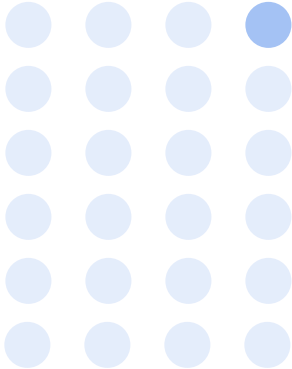


Non-Incremental vs. Incremental Turn Exchanges

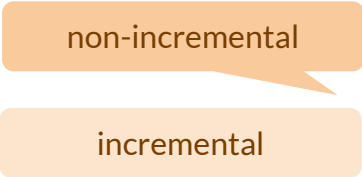


User Study

24 subjects



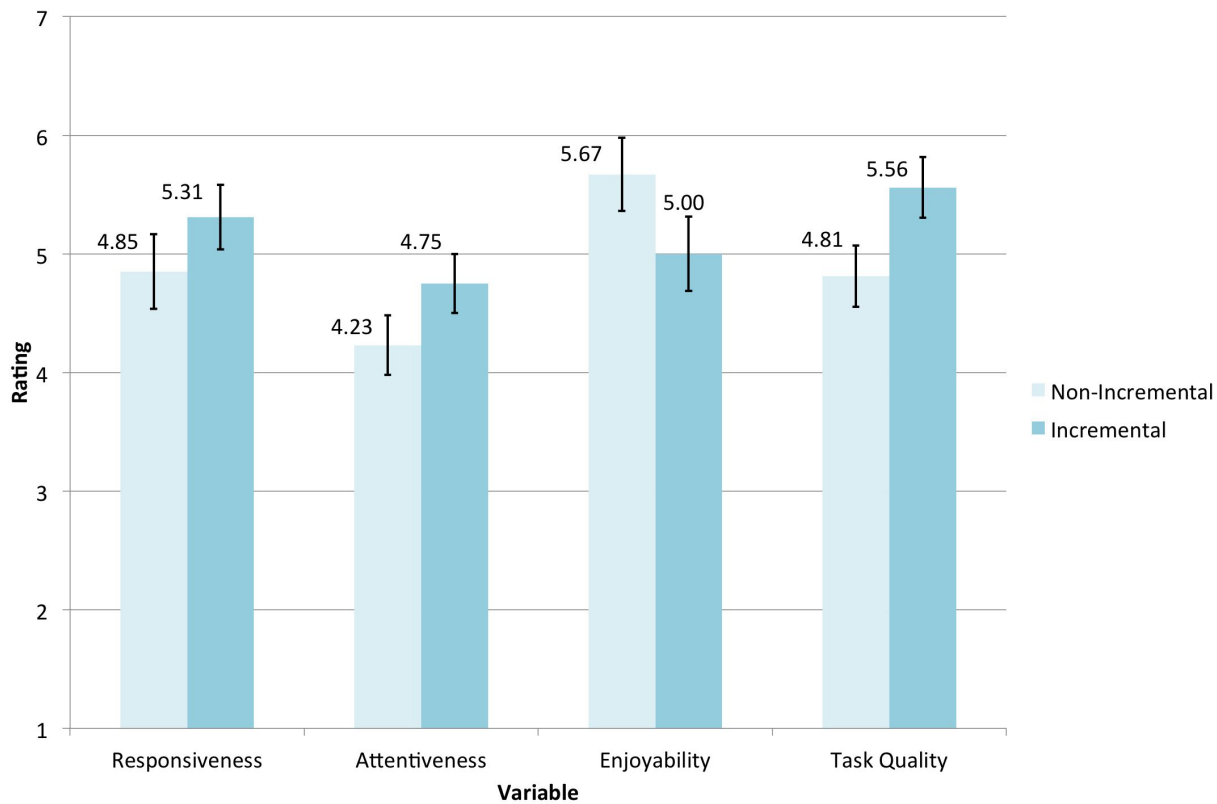
2 conversations



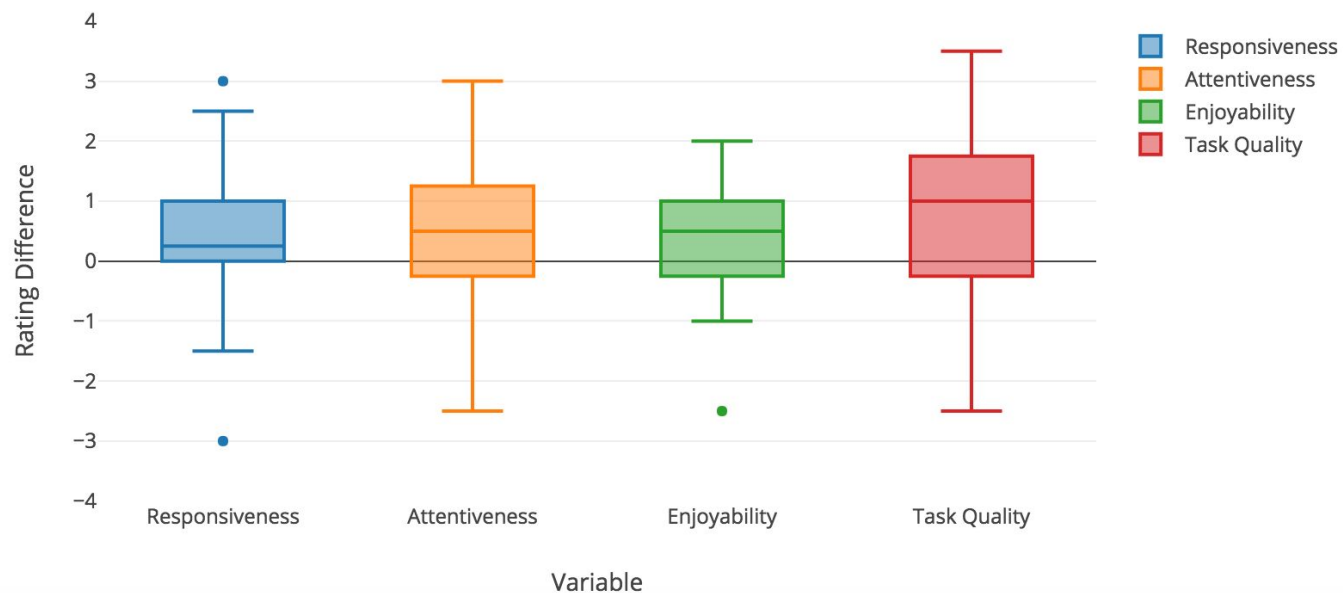
4 variables



Ratings for Non-Incremental vs. Incremental Systems

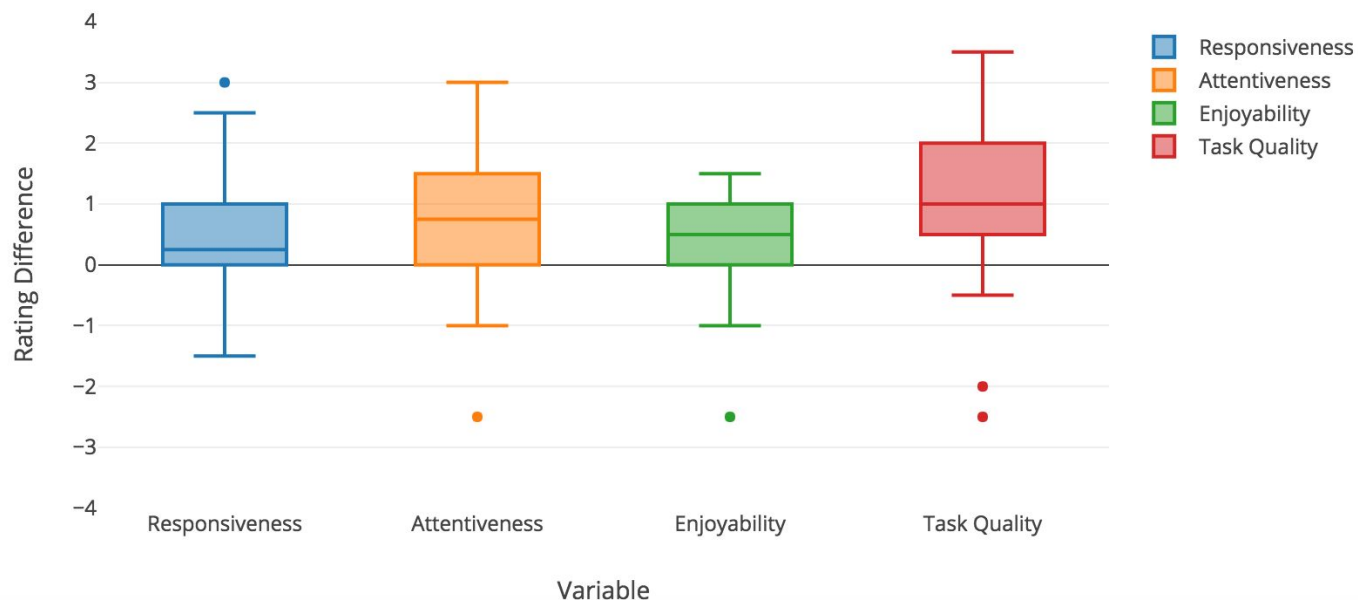


Difference in Incremental and Non-Incremental Ratings



Difference in Incremental and Non-Incremental Ratings

7+ years of English only (N = 18)



User Study Results

	all data (N = 24)	7+ yrs English (N = 18)
responsiveness	p = .0384	p = .0327
attentiveness	p = .0576	p = .0384
enjoyability	p = .0835	p = .0384
task quality	p = .0173	p = .0154

significant if p-value < .05

Conclusion

- objectively more responsive
- rated as more responsive by users
 - significantly higher ratings for *movie quality*
 - tendency for higher *attentiveness, enjoyability* ratings